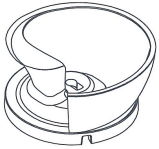


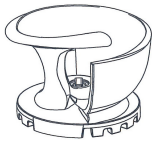


COMPONENTS	MATERIALS
Motor housing, hydraulic part	Grey cast iron
Shaft (pump side)	Stainless steel
Motor side mechanical seal	Carbon - ceramic
Pump side mechanical seal	Silicon carbide
Bolts	A2 stainless steel
Foot support	Galvanize iron
Gaskets (O-Ring)	NBR rubber

CHARACTERISTICS	
Electric motor	Asynchronous, oil immersed
Liquid temperature	0 - 40 °C
Insulation Class	F
Protection	IP 68
Cable	10 m. - H07 RNF



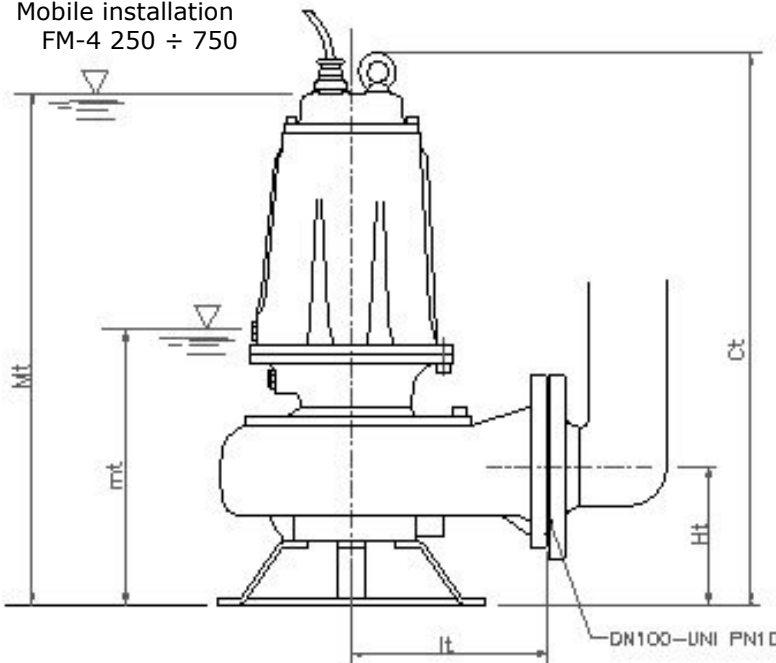
FM 250-4 T
300-4 T
400-4 T



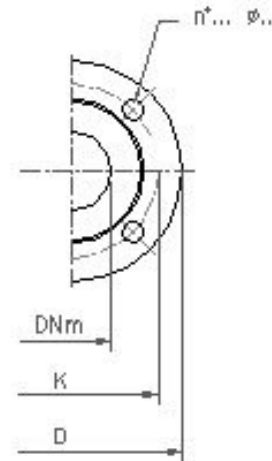
FM 550-4 T
750-4 T

Free passage:
60 mm (FM 250-4 T/ 300-4 T/ 400-4 T)
90 mm (FM 550-4 T/ 750-4 T)

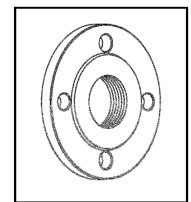
Mobile installation
FM-4 250 ÷ 750



mt: lowest working level
Mt: lowest level for continuous duty



ACCESSORIES:
Counterflange

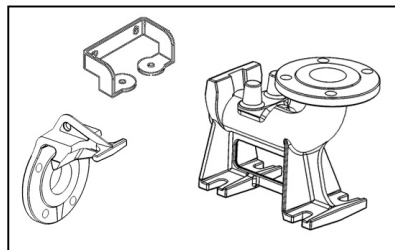


Depth of immersion:
Max 20 m

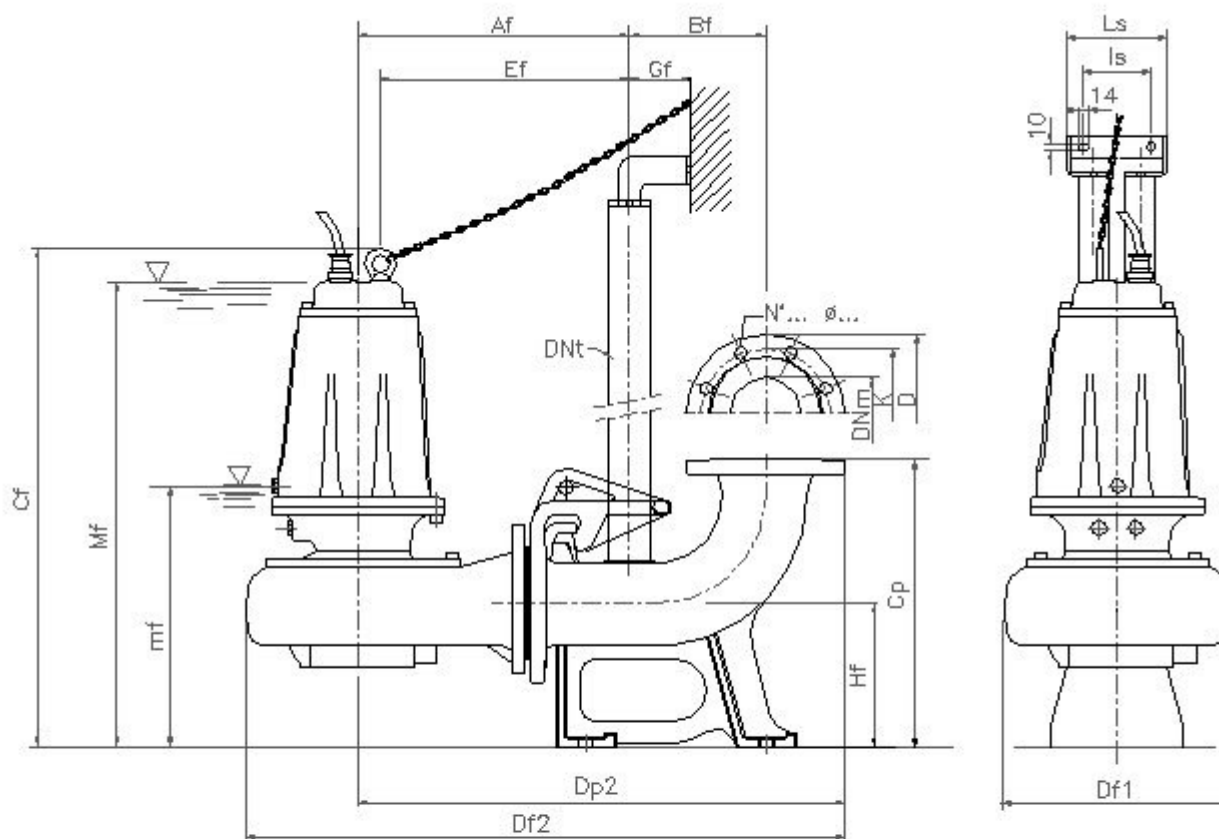
TYPE	DIMENSIONS (mm)					Flange UNI PN 10			Weight Kg
	Ct	Ht	It	mt	Mt	DNm	K	D	
FM 250-4 T	660	165	235	300	615	100	180	220	68,5
FM 300-4 T	660	165	235	300	615	100	180	220	70,5
FM 400-4 T	660	165	235	300	615	100	180	220	72,5
FM 550-4 T	715	195	276	385	695	100	180	220	105
FM 750-4 T	715	195	276	385	695	100	180	220	108,5

ACCESSORIES:

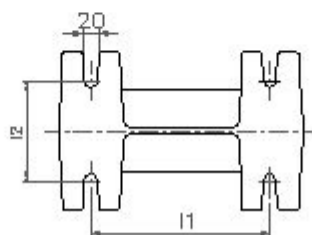
Quick coupling kit



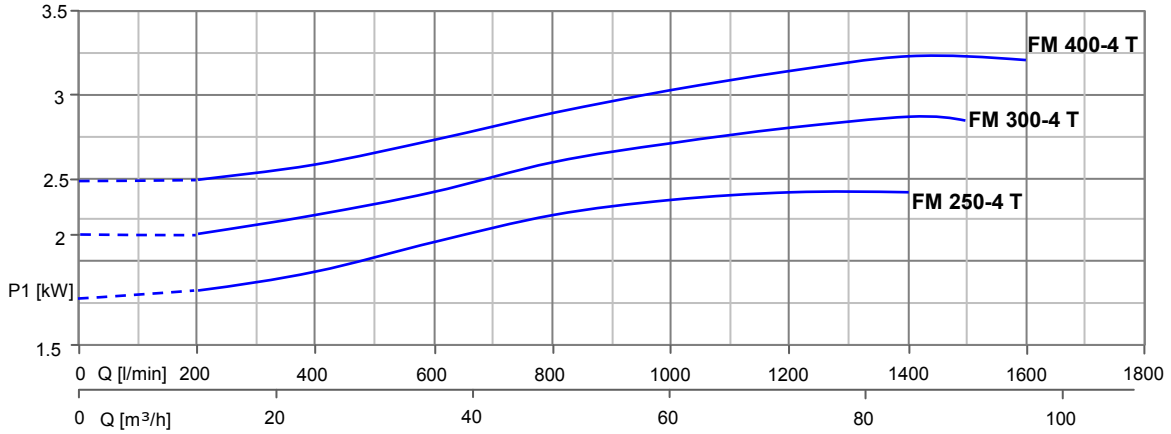
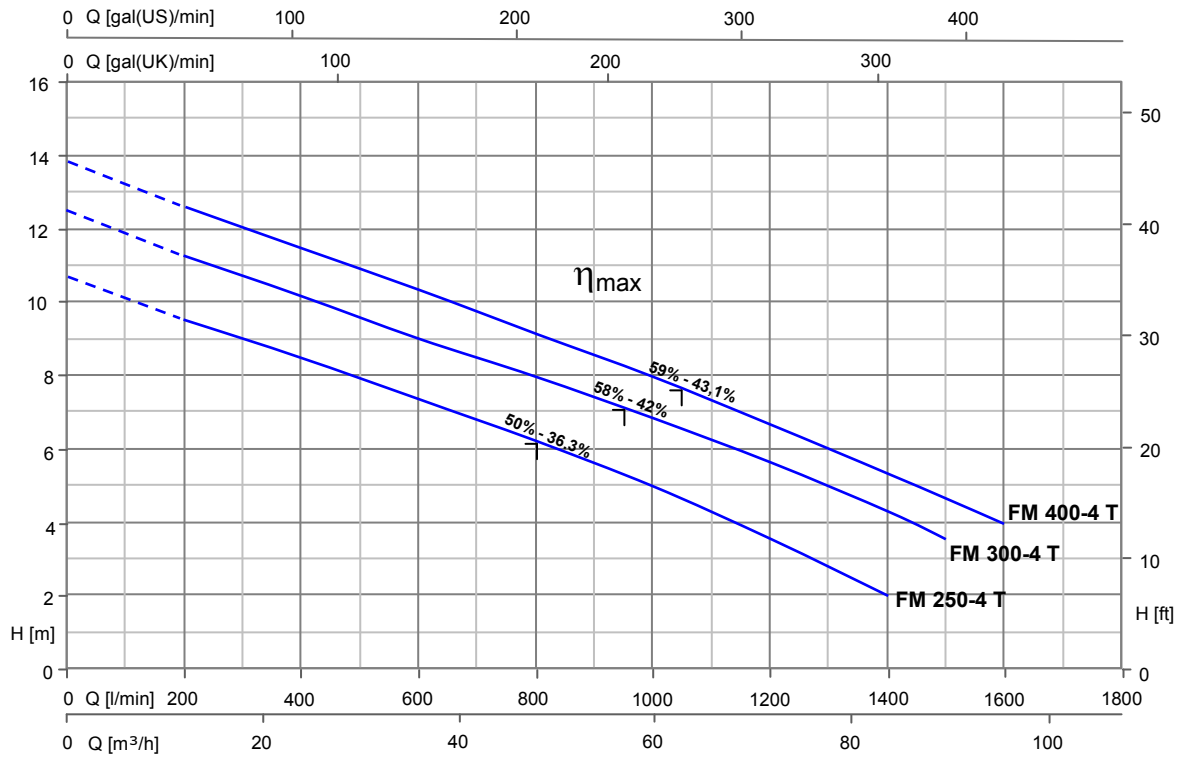
Fixed installation with quick coupling kit
FM-4 250 ÷ 750/ P



mf: lowest working level
Mf: lowest level for continuous duty

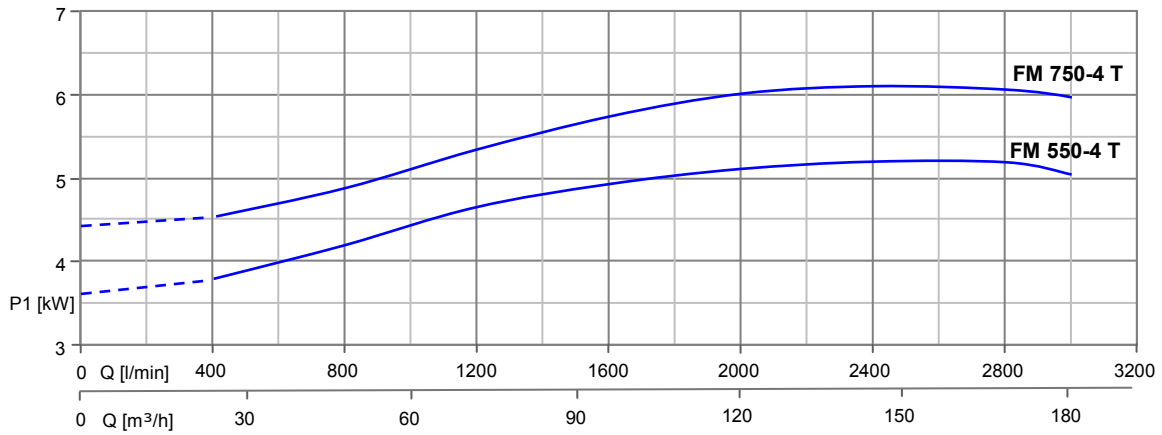
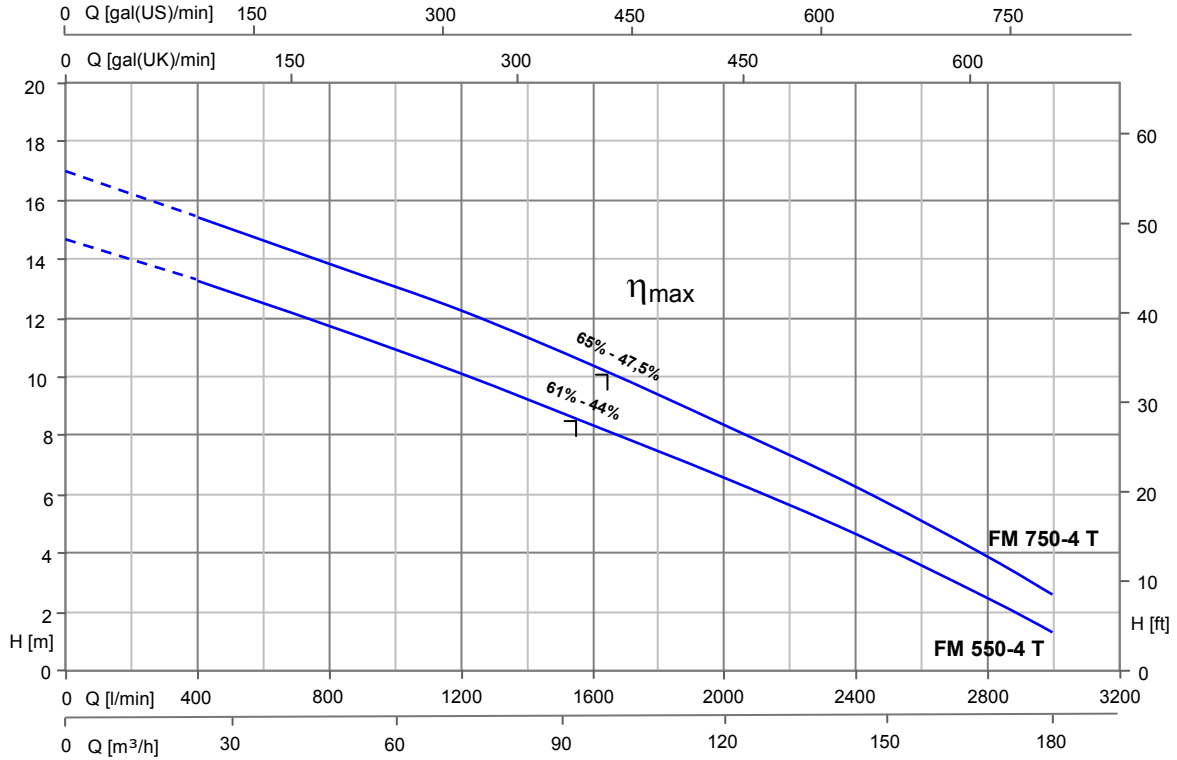


TYPE	DIMENSIONS (mm)															Flange UNI PN 10				
	Af	Bf	Cf	Cp	Df1	Df2	Dp2	Dnt	Ef	Gf	Hf	l1	l2	ls	Ls	mf	Mf	DNm	K	D
FM 250-4/P T	378	190	695	400	317	835	678	2"	347	85	200	250	140	130	180	335	650	100	180	220
FM 300-4/P T	378	190	695	400	317	835	678	2"	347	85	200	250	140	130	180	335	650	100	180	220
FM 400-4/P T	378	190	695	400	317	835	678	2"	347	85	200	250	140	130	180	335	650	100	180	220
FM 550-4/P T	417	190	755	400	371	900	717	2"	387	85	200	250	140	130	180	390	700	100	180	220
FM 750-4/P T	417	190	755	400	371	900	717	2"	387	85	200	250	140	130	180	390	700	100	180	220



TYPE	P ₂		P ₁ (kW)	A	Q (m ³ /h - l/min)											
					0	12	24	36	48	60	72	84	90	96		
3 ~					0	200	400	600	800	1000	1200	1400	1500	1600		
3 X 400 V - 50 Hz	(HP)	(kW)	3~	3X400V 50Hz	H (m)											
FM 250-4 T	2,5	1.8	2.4	4.5	10,8	9,6	8,5	7,4	6,3	5,1	3,6	2,1	-	-		
FM 300-4 T	3	2.2	2.9	5.2	12,6	11,4	10,3	9,1	8,0	6,9	5,7	4,3	3,6	-		
FM 400-4 T	4	3	3.2	6.5	14,0	12,7	11,6	10,4	9,2	8,0	6,7	5,4	4,7	4,0		

⌋ : η_{max} Max hydraulic efficiency and respective total efficiency



TYPE	P ₂		P ₁ (kW)	A	Q (m ³ /h - l/min)																	
					0	12	24	36	48	60	72	84	96	108	120	132	144	156	168	180		
3 ~					0	200	400	600	800	1000	1200	1400	1600	1800	2000	2200	2400	2600	2800	3000		
400 / 690 V - 50 Hz	(HP)	(kW)	3~	3X400V 50Hz	H (m)																	
FM 550-4 T	5.5	4	5.2	9.4	14,7	14,0	13,2	12,5	11,7	10,9	10,1	9,2	8,3	7,5	6,5	5,6	4,6	3,6	2,4	1,3		
FM 750-4 T	7.5	5.5	6.1	11.8	17,0	16,2	15,4	14,7	13,8	13,0	12,2	11,4	10,4	9,4	8,4	7,3	6,2	5,1	3,8	2,6		

⌋ : η_{max} Max hydraulic efficiency and respective total efficiency